

## Keeler PSL Classic Portable Slit Lamp

# Keeler

**NEW**



- Ideal for domiciliary and paediatric use or for busy clinic use
- The big Slit Lamp features such as fixation targets and a 1 mm square light patch for assessing a/c flare, setting a new standard
- Precision machined aluminium chassis
- Lightweight and easy to use
- Advanced optics, 10x and 16x magnification
- Controllable illumination from maximum to zero

9959 PSL Classic Portable Slit Lamp

£3795.00

## Keeler SL 16 Slit Lamp



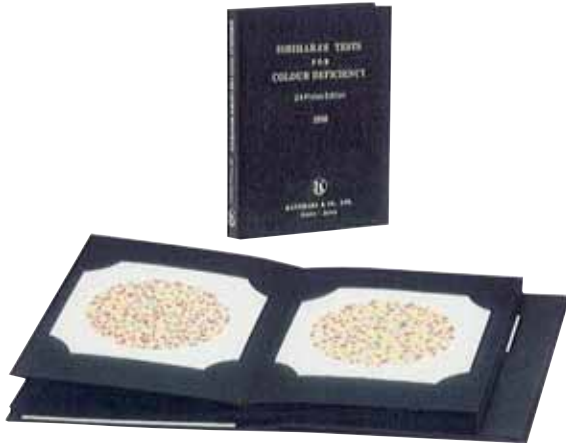
- Tower Illumination system, featuring up to 20° tilting tower illumination allows examination in the vertical, horizontal and oblique sections plus the option to offset the slit for corneal transillumination
- Filters include Cobalt blue, Green (Red free), Neutral density and heat absorbing
- Rapid magnification change from 10x to 16x
- Conventional 13° convergent optical system
- Optional fibre optic external illumination system
- Illumination control conveniently located next to the joystick
- Supplied with test bar, dust cover, spare lamp, spare fuses and breath shields

9960 SL 16 Slit Lamp

£3175.00



### Ishihara Colour Blindness Test



Ishihara Test Charts in hardback cover provide a quick and accurate assessment of congenital colour blindness. They distinguish between total colour blindness and strong and mild forms of both protan and deutan colour defects. A guide to the use and interpretation of the colour charts is provided.

Choice of three types:

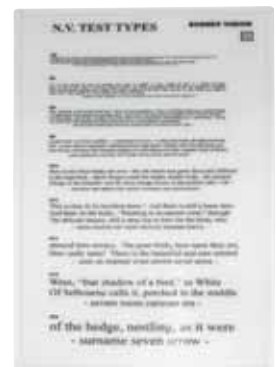
- **38-plate (Complete) Edition (ISBN 0718600800)** is used principally by Ophthalmologists, Optometrists and other professionals to define the type of colour deficiency
- **24-plate (Abridged) Edition (ISBN 0718600797)** is used principally by Airport Authorities, Local Government Offices, Recruitment Agencies, Factories and other businesses concerned with conducting sample surveys for colour deficiency in a short space of time or when hiring new employees
- **14-plate (Concise) Edition (ISBN 0718603257)** comprises a selection of charts from the 38-plate version to give the highest accuracy possible from a minimum set of plates

7359	Ishihara Colour Chart 38 Plates	£168.00
7358	Ishihara Colour Chart 24 Plates	£129.00
7357	Ishihara Colour Chart 14 Plates	£92.00

### Near Vision Test Types



- Choice of 2
  - Popular Snellen distance / News print & music
  - Near Vision – Modern Text
- Double sided laminated glare resistant washable wipe clean surface
- Snellen distance / New print & music sizes N5 to N48, as approved by the College of Ophthalmologists
- Near Vision – modern text uses Arial type face used in computers & print. Numerals are included to help with non-English readers and illiterates. A typical computer presentation is shown for patient working with computers. Print reduces to N4
- Dimensions: 25 x 14.5 cm



7366	Near Vision Test Types Modern Text	1	£10.50
7365	Near Vision Test Types Popular	2	£10.50

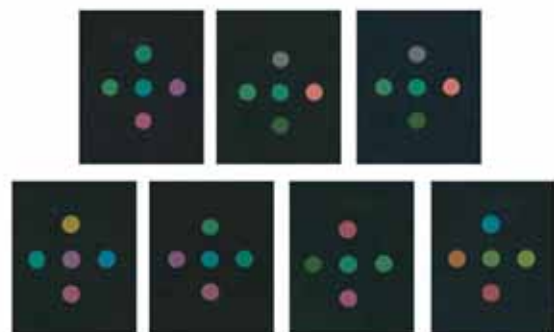
### Near Vision Reading Tests



- Near vision reading tests for children and adults

5815	Sheridan Gardiner Test Complete	3	£43.50
5817	Jaeger Reading Test Type	4	£34.90
5818	Keeler 4-page Washable Reading Test Type	5	£34.90
5816	Thomas The Tank Engine Reading Test Type	6	£34.90

### City Universal Colour Vision Test



- Ideal for children
- Simple to use
- Provides reliable results
- In book form

5819	City Universal Colour Vision Test	£124.00
------	-----------------------------------	---------

## Sussex 3 Metre Illuminated Test Type



- Portable test type with TVH chart and Child chart
- Handle becomes the stand and wall bracket
- Dimensions: 34H x 30W x 3.2D cm
- Weight: 1.8kg

7364 Sussex 3 Metre Illuminated Test Type £305.00

## Optec Portable Vision Testers

Demo Available



- Ideal for industrial and DSE screening needs
- Unique maintenance free LED lighting system
- Dual lens system for testing bifocal patients
- 6/4.5 (20/15) to 6/60 (20/200) visual acuity range
- Visual acuity, depth perception, colour, phoria and peripheral vision tests
- Remote control panel (Optec 5500P)
- Facilitates fast, accurate and effective patient testing

7133	Optec Vision Tester 5000P	£1975.00
7134	Optec Vision Tester 5500P	£2250.00
7135	Optec VDU 26" Lens	£99.00
7136	Optec Carry Case	£238.00

## 3 Metre Test Type



- Choice of 2
  - TVH / Child pictures (TVH test on side one, Child pictures on side two)
  - OXE / E (standard Snellen test on side one, illiterate 'E' on side two)
- Double sided laminated 3 metre tests
- Glare resistant washable wipe clean surface
- Hanging cord
- Dimensions: 26H x 11W cm

7362	3 Metre Test Type TVH / Child pictures	£12.50
7363	3 Metre Test Type OXE / E	£12.50

## 6 Metre Test Type



- Laminated hardwearing plastic card
- Single sided
- Dimensions: 50H x 20W cm

7484 6 Metre Test Type AOE Direct £21.00

